



Welcome to the
DONGYANG HEAVY INDUSTRIES

Company Motto



Greetings

We, DONGYANG Heavy Industries Co.,Ltd. Which has been supplying and manufacturing Hydraulic Hammer since 1989, are currently focusing on widening its business ways to international markets as a most reliable partner with up-to-date technology.

With its excellent know-how on hydraulic systems and evolving technologies, along with the firm and reliable foundation, its superior products have been getting high reputations about their quality, productivity as well as after sales services among the actual end users and heavy equipment dealers over the globe.

Today, it still strives to meet its customers' advanced needs with the confidence that this will make us communicate more easily with them. Its company motto "DONGYANG does make things better" says it all!

Company History

1989 - Established Dongyang Heavy Industries
- Developed & Released Hyd. Breaker
DYB-Series "DYB-300, 600, 1300"

1993 - Developed "DYB-50, 100, 800"

1994 - Developed "Quick Coupler (hitch),
"DYL-305, 605 & 1305"

1996 - Developed "DYB-70, 200, 450"

2000 - Developed "DYL-805" & "DYB-1500"

2001 - Developed "DYB-700, 1200"

2002 - Appointed to a "Venture Company" by
Ministry of Commerce

2004 - Acquired "Member of Chamber of Commerce"

2005 - Established "Overseas Sales Team"
- Participated in "BICES, in China"

2006 - Developed DHB-Series Hammers
- Participated in "Commex India Expo"

2007 - Participated in "Bauma 2007, Germany"

2008 - Participated in "Conexpo, Las Vegas"
- Participated in "Bauma China 2008, Shanghai"

2009 - Awarded "Seal of Excellence" by KOTRA
- Developed "DYB-400"
- Participated in "Intermat 2009, Paris"

2010 - Participated in "Bauma China 2010, Shanghai"

2011 - Developed "DHB-2000", for 60-100 ton excavator
- Participated in "Conexpo-Con/Agg 2011, Las Vegas"

2012 - Participated in "Bauma China 2012, Shanghai"



DYB Series

By maximizing demolition power and durability, **DONGYANG** breakers will make your working efficiency higher at the construction field.

Harmonized combination of hydraulic oil & N2 gas
Minimized internal torque for long life expectancy
Low-maintenance & fewer components
Maximized operating efficiency
Balanced power-to-weight ratio
Environment-friendly system
More impact power

A better design that combining efficiency, reliability and serviceability.

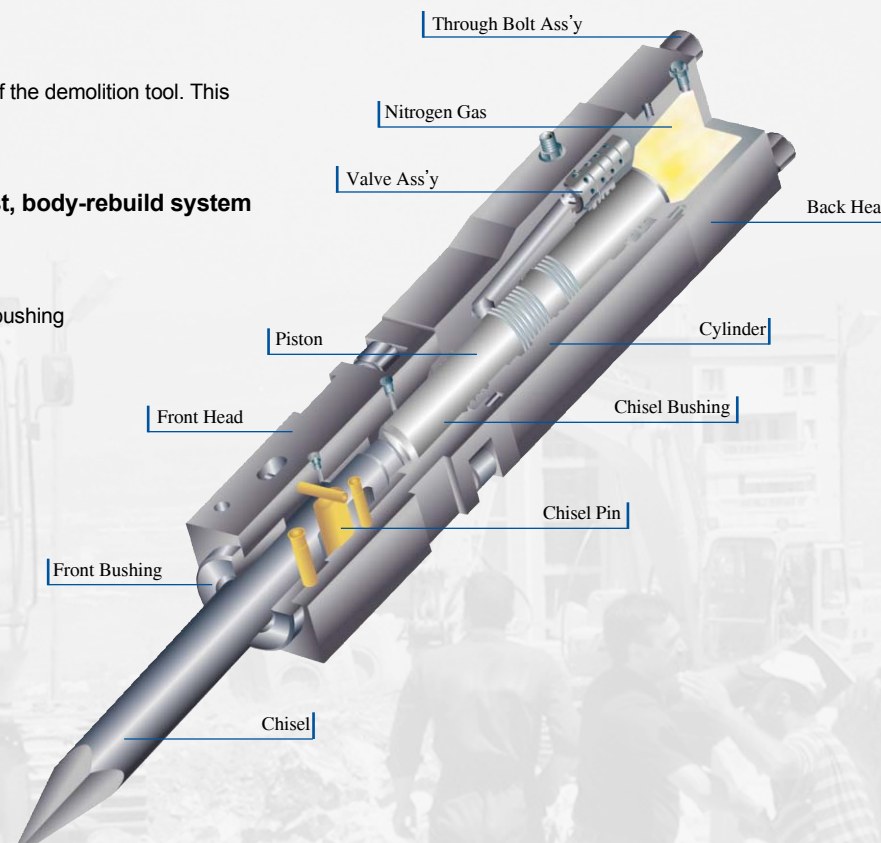
Unique nitrogen gas-powered piston maximizes hammer efficiency
Bottom tie rod nuts for easier serviceability
Quick-change tool system with single round retainer pin, up to DYB-300
Variety of tool configurations available
Replaceable cylinder bushings for easy, economical rebuild
Tool bushings engineered for quick, easy replacement

Simplified lubrication for greater reliability

Greasing port is provided for automatic and/or manual greasing of the demolition tool. This prevents damage or premature wear caused by a lack of grease.

Full serviceability of the industry's easiest, lowest cost, body-rebuild system

Hammers aren't meant to have an easy life. They occasionally need to be rebuilt. When the hammer body is involved, DONGYANG's replaceable bushing design can reduce your costs by a factor of five to ten.





DONGYANG Silence Series will satisfy you with its economical efficiency.



Vibration control that increases operator comfort and efficiency

Standardized features on all hammers, our shock-absorbing bracket uses special heavy-duty rubber mounts to absorb shock, recoil, and impulse vibration. Their unique design eliminates the need for mechanical springs and overly heavy mounting brackets. The net result is that you minimize machine wear and improve operator comfort for greater reliability and productivity.

Small Size

DESCRIPTION	UNIT	DYB-50S	DYB-70S	DYB-100S
Operating Weight	kg	100	134	148
	lb	220	295	326
Overall Length	mm	1087	1215	1285
	inch	42.8	47.8	50.6
Operating Pressure	bar	80~100	100~120	100~120
	psi	1160~1450	1450~1740	1450~1740
Required Oil Flow	ℓ /min	10~20	15~25	25~40
	gal/min	2.6~5.3	4.0~6.6	6.6~10.6
Impact rate	bpm	700~1200	700~1200	550~1000
Impact energy	joule	180	254	286
Hose Diameter	mm	9	12	12
	inch	3/8	3/8	1/2
Tool Diameter & Weight	mm	36	45	53
	inch	1.4	1.8	2.0
	kg	4	6	10
Applicable Carrier	m³	under 0.04	0.03~0.07	0.06~0.1
	ton	0.8~2.5	1.2~3.0	2.5~4.5
	ft³	under 1.4	under 2.5	2.2~3.5

Small & Medium Size

DESCRIPTION	UNIT	DYB-210S	DYB-300S	DYB-400S	DYB-500S
Operating Weight	kg	186	304	405	530
	lb	409	625	891	1168
Overall Length	mm	1363	1682	1684	2068
	inch	53.7	66.2	66.3	81.4
Operating Pressure	bar	110~130	140~160	140~160	120~150
	psi	1595~1885	2031~2321	2031~2321	1707~2133
Required Oil Flow	ℓ /min	25~45	30~45	40~70	60~100
	gal/min	6.6~11.9	7.9~11.9	10.8~18.4	15.8~26.4
Impact rate	bpm	500~900	500~800	400~800	400~800
Impact energy	joule	447	620	945	1029
Hose Diameter	mm	12	12	12	19
	inch	1/2	1/2	1/2	3/4
Tool Diameter & Weight	mm	60	68	75	85
	inch	2.2	2.7	3.0	3.3
	kg	14	18	26	40
Applicable Carrier	m³	0.08~0.2	0.15~0.25	0.2~0.4	0.3~0.5
	ton	3.0~5.5	4.0~7.0	6~9	7~12
	ft³	2.5~7	5.3~8.8	7.0~14.1	10.6~17.7



Optimal Design

To perform high impact energy with dependability.

1. Dampers for low noise & vibration.
2. Maximized availability.
3. High productivity.



CUSTOMER

With our excellent know-how on hydraulic systems and evolving technologies, we assure our customers that they will be satisfied with the distinguished after-sales service program as well as our superior products.

Medium Size

DESCRIPTION	UNIT	DYB-600S	DYB-700S	DYB-760S
Operating Weight	kg	880	1307	1462
	lb	1936	2750	3223
Overall Length	mm	2361	2615	2701
	inch	93	103	106.3
Operating Pressure	bar	150~170	150~180	160~180
	psi	2176~2466	2176~2610	2320~2610
Required Oil Flow	ℓ /min	80~120	100~140	100~150
	gal/min	21.1~31.7	26~36	26~39.6
Impact rate	bpm	400~700	400~600	400~600
Impact energy	joule	2630	4740	5210
Hose Diameter	mm	19	25	25
	inch	3/4	1	1
Tool Diameter & Weight	mm	100	125	135
	inch	3.9	4.9	5.3
	kg	60	97	112
Applicable Carrier	m ³	0.45~0.6	0.6~0.7	0.6~0.8
	ton	11~16	14~18	16~21
	ft ³	16~21.2	18~24	21.2~28.3

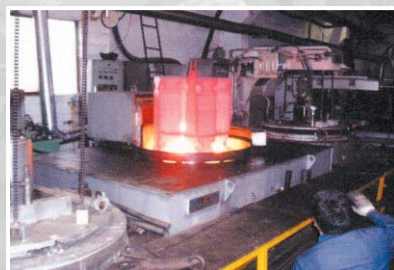
Large Size

DESCRIPTION	UNIT	DYB-800S	DYB-1200S	DYB-1500S
Operating Weight	kg	1903	2495	3957
	lb	4187	5410	8763
Overall Length	mm	2822	3306	3838
	inch	111.1	130.2	151.1
Operating Pressure	bar	160~180	160~180	160~180
	psi	2321~2611	2310~2610	2321~2611
Required Oil Flow	ℓ /min	130~170	170~230	200~300
	gal/min	34.3~44.9	45~62	52.8~79.3
Impact rate	bpm	400~600	300~400	250~350
Impact energy	joule	6380	10920	14210
Hose Diameter	mm	25	32	32
	inch	1	1 1/4	1 1/4
Tool Diameter & Weight	mm	140	155	175
	inch	5.4	6.1	6.9
	kg	133	180	247
Applicable Carrier	m ³	0.7~0.9	0.9~1.1	1.4~2.0
	ton	19~26	28~40	42~55
	ft ³	25~32	27~34	42.4~60

DONGYANG Top Type Series

Top type series has been approved capability and stability through long period of use.

This type is upgraded for working efficiency with easy maintenance and remarkable durability even in unfavorable working conditions. Easy disassembly and sturdily assembled structure makes customers much more satisfied.



QUALITY

Quality control system provides ultimately standardized products to end users. And, DONGYANG dealers eventually get less mental & physical exhaustion.

Small & Medium Size

DESCRIPTION	UNIT	DYB-50T	DYB-70T	DYB-100T	DYB-210T	DYB-300T	DYB-400T	DYB-500T
Operating Weight	kg	70	87	106	178	272	384	508
Height (Incl.Tool)	mm	1050	1146	1230	1288	1491	1613	2115
Operating Pressure	bar	80~100	100~120	100~120	110~130	140~160	140~160	120~150
Required Oil Flow	ℓ /min	10~20	15~25	25~40	25~45	30~45	40~70	60~100
Impact rate	bpm	700~1200	700~1200	550~1000	500~900	500~800	400~800	400~800
Impact energy	joule	180	254	286	447	620	945	1029
Hose Diameter	inch	3/8	3/8	1/2	1/2	1/2	1/2	3/4
Tool Diameter	mm	36	45	53	60	68	75	85
Applicable Carrier	ton	0.8~2.5	1.2~3.0	2.5~4.5	3.0~5.5	4.0~7.0	6~9	7~12

Medium & Large Size

DESCRIPTION	UNIT	DYB-600T	DYB-700T	DYB-760T	DYB-800T	DYB-1200T	DYB-1500T
Operating Weight	kg	872	1255	1455	1871	2450	3920
Height (Incl.Tool)	mm	2387	2621	2757	2781	3244	3841
Operating Pressure	bar	150~170	150~180	160~180	160~180	160~180	160~180
Required Oil Flow	ℓ /min	80~120	100~140	100~150	130~170	170~230	200~300
Impact rate	bpm	400~700	400~600	400~600	400~600	300~400	250~350
Impact energy	joule	2630	4740	5210	6380	10920	14210
Hose Diameter	inch	3/4	1	1	1	1 1/4	1 1/4
Tool Diameter	mm	100	125	135	140	155	175
Applicable Carrier	ton	11~16	13~18	16~21	19~26	28~40	42~55



DONGYANG Side Type Series

DONGYANG side type represents our breakers with mighty power. This type is very suitable to transport with base machine on travel.



TECHNOLOGY

R&D engineers are always striving to find out better solutions in hydraulic hammer operations. Over 20 years experiences will enable us to guide you to unexplored working conditions.

Small & Medium Size

DESCRIPTION	UNIT	DYB-50	DYB-70	DYB-100	DYB-210	DYB-300	DYB-400	DYB-500
Operating Weight	kg	70	85	104	154	264	380	492
Height (Incl.Tool)	mm	899	1010	1074	1124	1312	1366	1728
Operating Pressure	bar	80~100	100~120	100~120	110~130	140~160	140~160	120~150
Required Oil Flow	ℓ /min	10~20	15~25	25~40	25~45	30~45	40~70	60~100
Impact rate	bpm	700~1200	700~1200	550~1000	500~900	500~800	400~800	400~800
Impact energy	joule	180	254	286	447	620	945	1029
Hose Diameter	inch	3/8	3/8	1/2	1/2	1/2	1/2	3/4
Tool Diameter	mm	36	45	53	60	68	75	85
Applicable Carrier	ton	0.8~2.5	1.2~3.0	2.5~4.5	3.0~5.5	4.0~7.0	6~9	7~14

Medium & Large Size

DESCRIPTION	UNIT	DYB-600	DYB-700	DYB-760	DYB-800	DYB-1200	DYB-1500
Operating Weight	kg	853	1260	1410	1989	2460	3753
Height (Incl.Tool)	mm	1927	2155	2289	2337	2736	3236
Operating Pressure	bar	150~170	150~180	160~180	160~180	160~180	160~180
Required Oil Flow	ℓ /min	80~120	100~140	100~150	130~170	170~230	200~300
Impact rate	bpm	400~700	400~600	400~600	400~600	300~400	250~350
Impact energy	joule	2630	4740	5210	6380	10920	14210
Hose Diameter	inch	3/4	1	1	1	1 1/4	1 1/4
Tool Diameter	mm	100	125	135	140	155	175
Applicable Carrier	ton	11~16	13~18	16~21	19~26	28~40	42~55



DHB Series

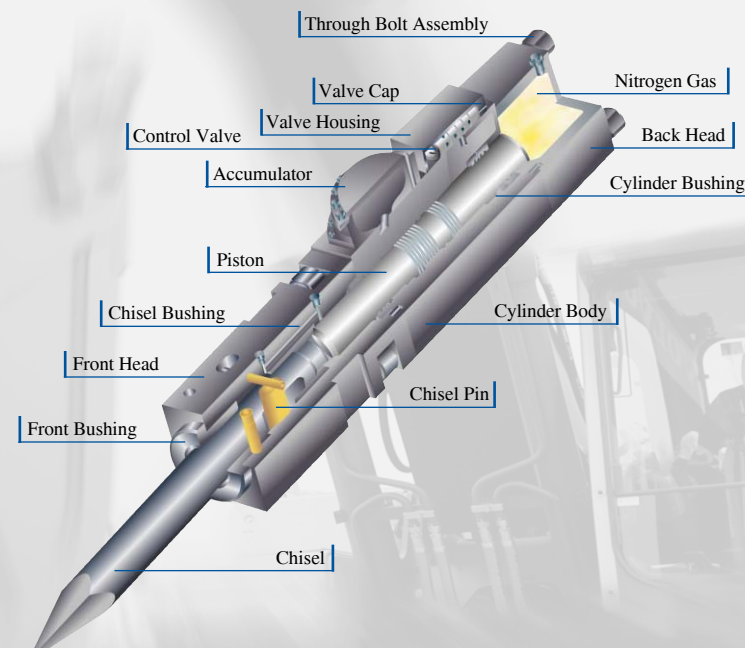
Designed and engineered to ensure maximum performance & to meet market needs. With high durability, you can confirm constant impact energy at steady oil flow rate.

Since the control valve housing is mounted out on its main body, it provides customers more dependability during its use.



Features of DHB Series

Being engineered and created by customers' strong needs and demands, experienced operators and users have given sincere compliments to their exceeding performances.



Silence type

DESCRIPTION	UNIT	DHB-700S	DHB-800S	DHB-900S	DHB-1400S	DHB-1500S	DHB-2000S
Operating Weight	kg	1308	1710	2454	3020	4120	7415
Overall Length	mm	2513	2766	3057	3306	3782	4443
Required Oil Flow	l/min	90~120	120~160	150~190	170~230	190~270	290~370
Operating Pressure	bar	160~180	160~180	160~180	160~180	160~180	190~210
Impact rate	bpm	350~750	400~700	300~550	250~400	200~350	200~400
Impact energy	joule	4250	5830	8250	12110	14870	16740
Tool Diameter	mm	120	135	150	160	180	210
Applicable Carrier	ton	13~18	16~25	25~32	30~42	45~60	70~100



DONGYANG DHB Series

Symbolic products of “Customized Solutions” Since it has totally been designed by clients

Top type

DESCRIPTION	UNIT	DHB-700T	DHB-800T	DHB-900T	DHB-1400T	DHB-1500T	DHB-2000T
Operating Weight	kg	1252	1668	2380	2960	4064	7251
Overall Length	mm	2510	2775	3062	3265	3854	4385
Required Oil Flow	ℓ /min	90~120	120~160	150~190	170~230	190~270	290~370
Operating Pressure	bar	160~180	160~180	160~180	160~180	160~180	190~210
Impact rate	bpm	350~750	400~700	300~550	250~400	200~350	200~400
Impact energy	joule	4250	5830	8250	12110	14870	16740
Tool Diameter	mm	120	135	150	160	180	210
Applicable Carrier	ton	13~18	16~25	25~32	30~42	45~60	70~100



Material selection

It is an essential key-word to determine hammer quality. DONGYANG's concrete resolution of using only qualified materials will never be weakened and we promise we will stick it to the end.

Side type

DESCRIPTION	UNIT	DHB-700	DHB-800	DHB-900	DHB-1400	DHB-1500	DHB-2000
Operating Weight	kg	1269	1684	2394	3085	4010	7180
Overall Length	mm	2040	2290	2571	2737	3249	3792
Required Oil Flow	ℓ /min	90~120	120~160	150~190	170~230	190~270	290~370
Operating Pressure	bar	160~180	160~180	160~180	160~180	160~180	190~210
Impact rate	bpm	350~750	400~700	300~550	250~400	200~350	200~400
Impact energy	joule	4250	5830	8250	12110	14870	16740
Tool Diameter	mm	120	135	150	160	180	210
Applicable Carrier	ton	13~18	16~25	25~32	30~42	45~60	70~100



CHISEL SELECTION



Moil Point

This tool is appropriate for breaking oversize material and concrete pads where a chisel point may go through too quickly.



Flat Wedge

This tool is suitable for general breaking works where accurate control cut is not required.



Blunt

This tool is designed for the demolition of oversized rock and slabs.

BACKHOE LOADER



Backhoe Loader

1. Specially designed frame for best productivity
2. Customized selections for each backhoe
3. DYB-300B & 400B is most suitable

SKID STEER LOADER



DESCRIPTION	DYB-100S-SL	DYB-100T-SL	DYB-210S-SL	DYB-210T-SL
Operating Weight	217 kg	175 kg	260 kg	223 kg

* For other technical specifications, please refer to the DYB Series specification tables

- Features:**
1. Prompt activity in narrow spaces
 2. Superior durability on light-structure design
 3. Maximized productivity by custom Solutions

QUICK COUPLER

DONGYANG quick coupler for excavators combines stability and agility



DYL-305		DYL-605		DYL-805		DYL-1305	
Weight	63 kg	Weight	154 kg	Weight	358 kg	Weight	561 kg
Arm Width	250~295 mm	Arm Width	350~430 mm	Arm Width	460~475 mm	Arm Width	470~530 mm
Optimum Oil flow	10~20 lpm	Optimum Oil flow	10~20 lpm	Optimum Oil flow	10~20 lpm	Optimum Oil flow	10~20 lpm
Working Pressure	30~200 kg/cm ²	Working Pressure	30~200 kg/cm ²	Working Pressure	30~200 kg/cm ²	Working Pressure	30~200 kg/cm ²
Applicable Carrier	2.2~7.5 ton	Applicable Carrier	10~16 ton	Applicable Carrier	19~26 ton	Applicable Carrier	28~35 ton

* Above standard models can be verified upon your carriers to provide perfect fit.

HYDRAULIC COMPACTOR

Crucial attachment for slope-sided road construction, building foundation works, drainage compacting works, etc.

Advanced technology;

- ☞ Specially designed 45 degree inclined vibration-proof rubber absorbs and minimizes shock power
- ☞ The special technology provides improvement in works, as well as economical efficiency
- ☞ No pressure adjustment due to a high pressure generating motor
- ☞ Working feasibility through adjusting RPM control device

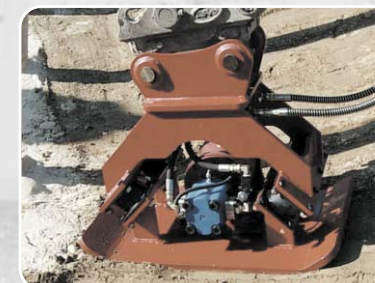


It is mainly used for;

Compacting slope surface on road construction.
Compacting soils, gravels, etc.
Compacting soil recovery after pipeline works.
Compacting drain path and rocked surface Pile driving works.

Technical specifications;

Description	Impulse Force	Vibration per Minute (Max)	Required Oil Flow	Working Pressure	Weight	Suitable Excavator
	ton	vpm	lpm	kg/cm ²	kg	ton
DYV-300	2~3	2400	60~80	90~130	280	4~7
DYV-600	5~6	2400	80~110	100~140	550	11~16
DYV-800	7~8	2000	110~140	120~160	700	18~24
DYV-900	9~10	2000	130~160	130~170	950	25~34



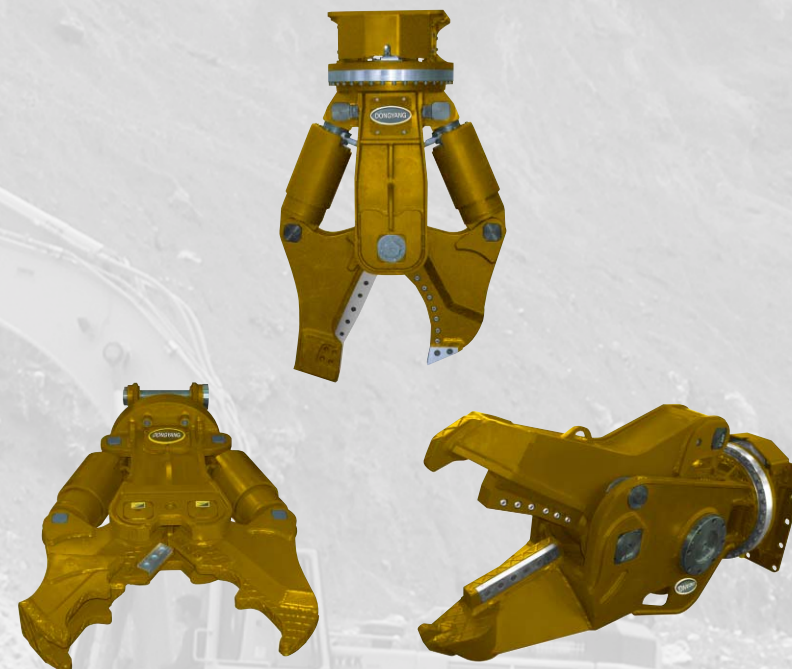
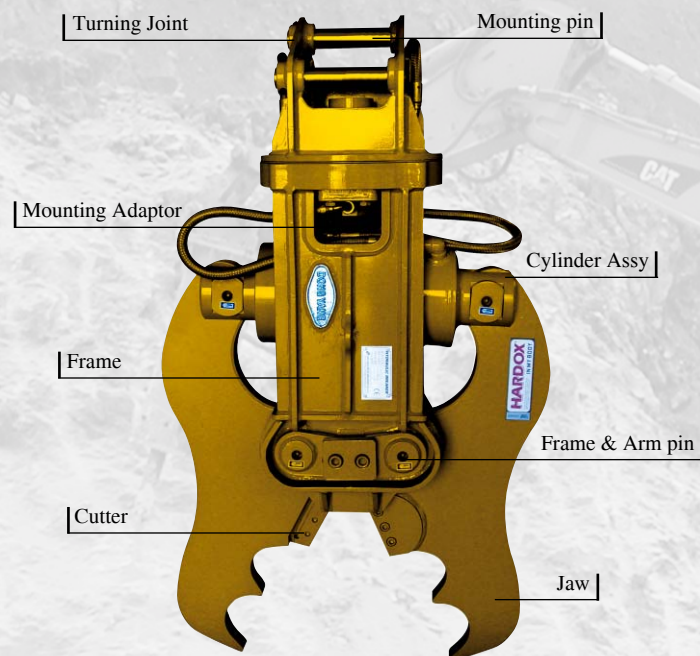
DEMOLITION

Essential attachment for building demolitions where environmental pollutions such as noise or vibration, etc., should be limited.



Usages are the followings
Cutting iron beams of building structure.

Crushing thick concrete walls
Crushing hard concrete or structure
Refurbishing jobs for concrete building
Re-innovation works and partial inside demolition works



Attachments jaws of Crusher, Pulverizer, Shear, Demolition are interchangeable to one another.
You can ask Dongyang for product details which are not described on this page.

Technical specifications for Crusher

DESCRIPTION	DYC-70	DYC-100	DYC-300	DYC-600	DYC-1000	DYC-2000	DYC-3000
Weight(kg)	102	183	320	380	1250	1800	2350
Length(mm)	887	1100	1296	1390	1582	1836	1981
Operating Pressure(kgf/cm ²)	210	210	210	210	300	320	320
Jaw Width(mm)	282	354	436	533	290	320	380
Cutting Power(ton)	58.1	60.3	82.9	96.7	206	270	286
Crushing Power(ton)	20.4	22.1	28.5	32.0	143	178	199
Applicable Carrier(ton)	~1	1~2	2~4	4~7	12~16	20~25	28~37



Stone Grapple(Turnstile type)

Technical specifications

	DSG-300T	DSG-600T	DSG-800T	DSG-1000T
Operating Weight(kg)	320	650	940	1520
Jaw Width(mm)	1280	1800	2200	2500
Operating Pressure(bar)	110~140	150~170	160~180	160~180
Applicable Carrier(ton)	4~7	11~16	18~26	30~45
Lifting Capacity(ton)	1.4	3.2	5	6.2



Stone Grapple(Fixed type)

Technical specifications

	DSG-100F	DSG-300F	DSG-600F	DSG-800F	DSG-1000F
Operating Weight(kg)	100	250	620	950	1350
Jaw Width(mm)	800	1150	1600	2100	2400
Operating Pressure(bar)	110~130	110~140	150~170	160~180	160~180
Applicable Carrier(ton)	2~3	4~7	11~16	18~26	30~45



Do not pull or push any buried stones by jaw. It can cause severe damages to cylinders.
Pounding stones with jaw can cause deformation, cracks of welding points and cylinder damages as well.
Moving a structure with grapples is strictly prohibited.

Wood Grapple

Technical specifications

	DWG-300T	DWG-300F	DWG-600T	DWG-800T
Operating Weight(kg)	250	210	640	930
Jaw Width(mm)	1100	1100	1800	2200
Operating Pressure(bar)	110~130	110~130	150~170	160~180
Applicable Carrier(ton)	4~7	4~7	11~16	18~26

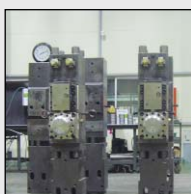


Ripper

Technical specifications

	DRP-300	DRP-400	DRP-600	DRP-800	DRP-1000
Operating Weight(kg)	85	120	220	370	480
Applicable Carrier(ton)	4~7	7~12	11~16	18~26	30~45





1. Material Selection

Only qualified products can be made with strict standards & experiences for each parts.

2. Machining Process

Computerized process with experienced technicians serves you the highest quality products.



3. Heat Treatment

Essential key-word in determining durability. Eagle-eyed engineers go along with furnaces.

4. Abrasion

Final achievement to meet advanced technical designs.

5. Assembly & Test

Engineers accomplish the sensitive statues, according to work manuals.
Hydraulic test system decides the future of each product.

Suitable Carriers for DONGYANG Hydraulic Breakers



When you order hammers, you can appoint excavator models to which hammers shall be attached for perfect fitting. Otherwise, if you do not appoint any excavator model, hammer mounting specification will be provided with DONGYANG standards.

MODEL	DYB-50	DYB-70	DYB-100	DYB-200	DYB-300	DYB-400	DYB-450	DYB-600	DHB-700	DYB-700	DHB-800	DYB-800	DHB-900	DYB-1200	DHB-1400	DYB-1500	DHB-1500
Applicable Carrier	2.5~4.0	2.5~4.0	2.5~4.0	3.0~5.0	4.0~7.0	6.0~9.0	7.0~10	10~15	13~18	13~18	18~25	19~26	25~32	28~40	30~42	42~55	45~60
Suitable Excavator	CAT		302-5 303-5	307 303CR	305CR,307 416D		307	311,312,314	317,M318 320L	317,M318 320L	545	320	229			245,365 50ME	245,365
		301		216 226	420,426 304-5,232	E70B	308	E110B,205	214B,315	214B,315	320	321	325	330(L)	S330(L)	345,350(L)	345,350(L)
				228	236,242 246,248	428	931	206,515	E120B	E120B	320B	322(L)	330(L)	235	345BL		50ME
					438,E70B	430	446B	206BFT 212BFT	525B	525B	322		235				345,350(L)
	HYUN DAI	R16-7			R55-7 HSL850-7			R130W	R170(W)-7	R170(W)-7		R210LC-7	R290LC-7		R320LC-7	R420LC-7	R420LC-7
			R22-7		R60W-7	R60	R80-7	R130LC-7	180(W)LC-7	180(W)LC-7	R210LC-7	R250LC-7	R320LC-7		R360LC-7	R450LC-7	R450LC-7
				R35-7	R55-5			R140LC-7	R190(W)LC	R190(W)LC						R500LC-7	R500LC-7
	HITACHI	EX8	UE10	ZX27U,30U	ZX40U-2	EX60,70,75	EX70, 75	EX100	ZX160W	ZX160W	ZX230	240LC					
		EX12	UE15 EX18	X27U,30U 35U	ZX50UR-2	ZX70,75	EX70,80,90 WH04 ZX110 EX50,EX60	EX120	EX150 160WD	EX150 160WD	EX200,220	ZX230	EX270, 300	EX270, 300			
	KOMATSU	PC10	PC20		45-1	PC50/60		PC100	PC160-6	PC160-6	PC200-6	PC240	PC250	PC250	PC300	PC400,450-6	PC400,450-6
			25 30		60-7 PC40	PC75/80 PW75 PC90	PC75 PC80	130-6,150 PW130-6	180-6 PW170ES-6	180-6 PW170ES-6							
	JCB			1CX, 2CX 803,804	3CX,4CX		3CX	JS130									
		801	8015 8016	ROROT150 160/165 170/185	JS70 ROROT190	ROROT1105 1110, 407/408/409 410ZX	4CX ZL70	JS145,805 806,811 812,814 5C/W	JS160,180 JS150,175	JS160,180 JS150,175	JS220 JS240 JS200		JS330	JS330	JS330	JS450 JS460	JS450 JS460
	KOBELCO	SK015 SK020	15SR 20SR	30 30SR	40SR 55SR	SK050 SK60	SK60 70SR	100W 115SR	120LC 150LC	120LC 150LC	230LC 250LC	SK300E SK270 SK300E SK320	350 300LC 320 330	350 300LC 320 330	350LC 330LC	400 430 450	400 430 450
	DOOSAN	15		30	50W 55	70	70 80	130W 135W 140W 150	170W-3	170W-3	225LC-7 220LC-5	300 258LC-7	300LC-5 290LC-3 330LC-3	300LC-5 290LC-3 330LC-3	360LC-3	420 400LC-3 500	420 400LC-3 500
	New Holland	E9	E16 E18	E20 E22 E27	E30 E35	E40 E50 B90B B100B	E70SR E80SR E90	MH2.6 MH3.6	MH-3A E135B	E135B E150	E175B MH5.6 E195B	E195B MH6.6 MH8.6 E215	E235 E245	E305 E265	E385	E485B	E485B
	VOLVO	EC14 EC15B		EC30 EC25	3W EC35	EC70 EW50 EW70	BL74 L50D 612	EC130 EW130 SE130W	EC140B EC150 EW150	EC140B EC150 EW150		EC280 EC290 EC300	C340 EC360 EC390/420	C340 EC360 EC390/420	352 360B	EC620 EC650	EC620 EC650
			EC20B	ZL302C	EC45	L20B/25B L30B/35B L40B/45B	L40B	EW140/646 L90E L70E	EW160 L90E	EW160 L90E		SE280 SE350	EC450/460	EC450/460	460B		
	LIEBHERR					A310 L506/507 508/509 512/514	512 514 A308	A308 A310	A312 A309	A/R902 A/R900 R313 R312 A316	A/R902 R317 R313 R312 A316	A900C A904 A912 A922 R906	A/R942LIT R926 R954 R961 R962	R924 R926 R954 R961 R962	R944 R952 R926 R944 R952LIT R954LIT	R954 R962LIT R995 R974	A944 R962LIT R964

Thank you!